

# State of Wyoming Corner Record

(In compliance with the *CORNER PERPETUATION AND FILING ACT*, Wyoming Statutes, 1997 Section 33-29-140 et. seq., and the Rules and Regulations of the Board of Professional Engineers and Professional Land Surveyors)

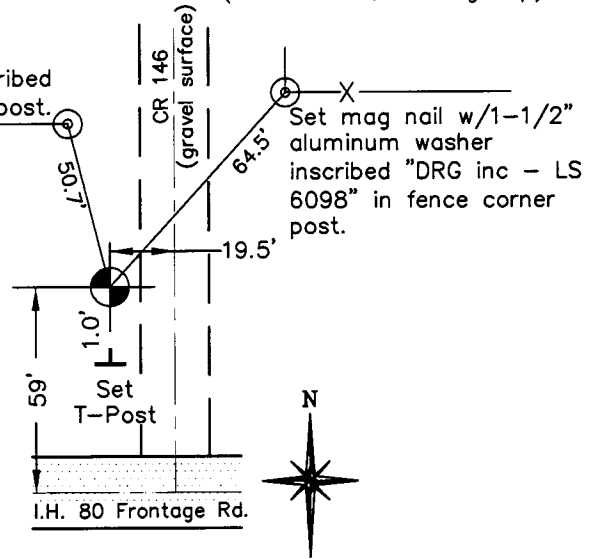
Reverse side of this form may be used if more space is needed.

Record of original survey and citation of source of historical information (if corner is lost or obliterated). Description of corner monumentation evidence found and/or monument and accessories established to perpetuate the location of this corner. Sketch of relative location of monument, accessories, and reference points with course and distance to adjacent corner(s) (if determined in this survey). Method and rationale for reestablishment of lost or obliterated corner.

U.S.G.L.O. 1871 Record: Set a granite boulder 18x12x4 for corner to sections 22, 23, 26 & 27. evidence of monument or accessories found. Corner is lost.

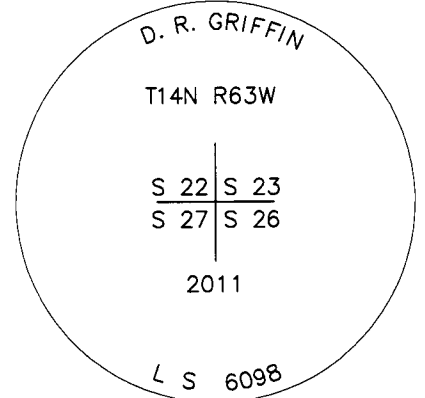
Establish corner position by double proportion from the found monument (1/2" iron pipe) for the southwest corner of Section 26, the found monument (LS 2500) for the southwest corner of Section 22, the calculated from reference corner (PLS 519) position for the north quarter corner of section 25 and the found monument (No. 5 rebar, missing cap) for the southeast corner of Section 15.

Set mag nail w/1-1/2" aluminum washer inscribed "DRG inc - LS 6098" in fence post.

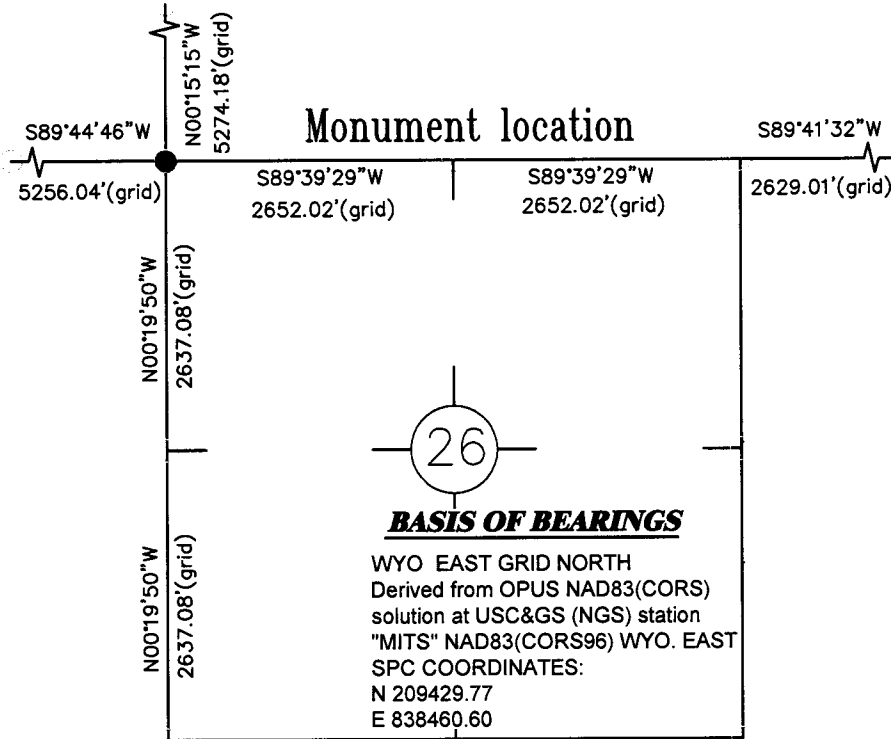


WYO. SPC EAST GRID NORTH

Set a 2-1/2" Aluminum Cap on a 30" no. 6 rebar 0.1' above ground and inscribed as shown below.



**Monument Inscription**



RECORDED 8/09/2011 AT 10:16 AM REC# 573777 BK# 2231 PG# 461  
DEBRA K. LATHROP, CLERK OF LARAMIE COUNTY, WY PAGE 1 OF 1

Date of Field Work: 6/12/11

Office Reference: 18661

## Cross Index Plat

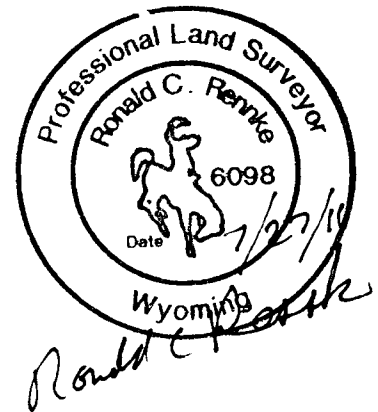
	1	2	3	4	5	6	7	8	9	10	11	12	13	14	15	16	17	18	19	20	21	22	23	24	25
A																									
B																									
C		6	5																						
D																									
E																									
F																									
G			7	8																					
H																									
J																									
K																									
L			18	17																					
M																									
N																									
O																									
P																									
Q			19	20																					
R																									
S																									
T																									
U																									
V																									
W																									
X																									
Y			31	32																					
Z																									
	1	2	3	4	5	6	7	8	9	10	11	12	13	14	15	16	17	18	19	20	21	22	23	24	25

Firm/Agency, Address

RONALD C. RENNKE  
D. R. GRIFFIN & ASSOCIATES  
1414 ELK STREET  
ROCK SPRINGS, WYOMING 82901  
Telephone Number: (307) 362-5028

This corner record was prepared by me or under my direction and supervision.

*SEAL & SIGNATURE*



Corner Name Northwest Corner Section 26, T 14 N, R 63 W, 6th P.M.

Cross-Index No.: R-17

County: Laramie, Wyoming

SBREPLS/PLSW: March 1994; PLSW January 1998